

L | A | L O U V E R |

VENICE, CALIFORNIA
LALOUPER.COM

Heather Gwen Martin

NERVE LINES AND FEVER DREAMS

24 MAY – 2 JULY 2021



Garden Party, 2021, oil on linen
35 x 37 1/2 in. (88.9 x 95.3 cm)

L.A. Louver is pleased to present a solo exhibition of new work by Heather Gwen Martin, featuring abstract oil paintings in a variety of sizes, and a series of intimate gouache on paper in saturated tones.

The paintings in *Nerve Lines and Fever Dreams* were made during this strange pandemic period and reflect the lockdown-heightened awareness of both the body in the world and the mind in the body. These dueling physical and metaphysical concerns create a push-pull of compositional energy: Martin's rich colors ignite the mind, while organic forms and lines encourage an embodied, dancing sort of viewing — quick, and then slow. Ideas that begin as sub-conscious stories via dreams and sense memories are communicated through the bodily act of painting.

The expression of these bodily systems through painting illuminates an intimacy between the self and the environment. By translating the experience of the world onto the painted surface, Martin establishes a connection between actions on the canvas and in the world. She communicates the feeling of sun on skin with the bold, hot color of *High Noon*, and the tranquility of a quiet garden with the hothouse colors of *Fever Dream*.

Some works, such as the horizontally-aligned *Gazer*, convey a lyric elegance through both line and color. This format diverges from Martin's near-square paintings, and here she has accentuated the shape of the canvas with sweeping thin lines of dark navy. These play off of an anchoring red form at upper right and an ethereal yet playful collection of forms in shades of palest lime. This dance plays out over a ground of soft dove grey.

FOR IMMEDIATE RELEASE

April 2021

Media Contact:

Darius Sabbaghzadeh
darius@hellothirdeye.com

Kyle Hinton
kyle@hellothirdeye.com

L.A. Louver
45 N Venice Blvd
Venice CA 90291
info@lalouper.com
310 822 4955
lalouper.com



Gazer, 2020, oil on linen
30 x 54 ¾ in. (76.2 x 139.1 cm)

Other works seem pregnant with color, full and brimming with pure pigment. *Glider's* rotund blue edges onto a surface of rich berry red, alive with organic abstractions in pinks and greens. Prolonged viewing reveals subtle variations of color and detail.

The exhibition will also include a suite of intimately scaled works on paper that throb with a chromic intensity that belies their petite dimensions. These works adapt Martin's signature blend of lyricism and impeccable color sense to a new medium: gouache on paper. *Scape*, though just under four inches square, conveys a monumentality of form, with its midnight green form looming behind outgrowths of pale lilac and a rich vein of marigold.

Born in 1977 in Saskatchewan, Canada, Heather Gwen Martin studied at the University of California, San Diego and The School of the Art Institute of Chicago. She has been included in museum exhibitions at the Museum of Contemporary Art San Diego, CA; Torrance Art Museum, Torrance, CA; El Segundo Museum of Art, El Segundo, CA; the Pizzuti Collection, Columbus, OH; Frist Art Museum, Nashville, TN; Chrysler Museum of Art, Norfolk, VA; and the Claremont Museum of Art, Claremont, CA.

Concurrently on view at L.A. Louver (24 May – 2 July 2021):
FIRST FLOOR GALLERY
Rebecca Campbell: Infinite Density, Infinite Light

Media Contact:

Darius Sabbaghzadeh: darius@hellothirdeye.com

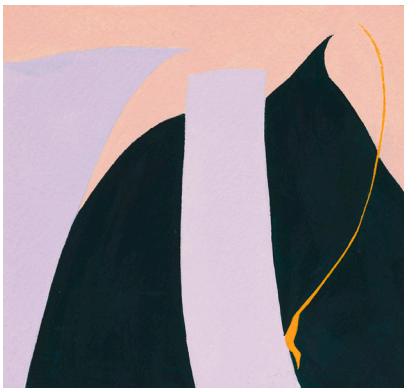
Kyle Hinton: kyle@hellothirdeye.com

L.A. Louver

45 N Venice Blvd, Venice CA 90291

info@lalouper.com · 310 822 4955

lalouper.com



Scape, 2020, gouache on paper
3 ¾ x 4 in. (9.5 x 10.2 cm)