

David Hockney The Yosemite Suite

13 July – 1 October Opening reception: Wednesday, 13 July, 6-8 pm



left to right: Untitled No. 8, Untitled No. 15, and Untitled No. 23, 2010, from *The Yosemite Suite*
iPad drawing printed on paper, 37 x 28 in. (94 x 71.1 cm), Edition of 25
© David Hockney. Photo credit: Richard Schmidt

Venice, CA -- L.A. Louver is pleased to present an exhibition of iPad drawings by David Hockney. Titled *The Yosemite Suite*, the exhibition includes over two dozen new prints in which the celebrated British artist depicts one of America's most famous national parks.

During visits to California's Yosemite Valley in 2010 and 2011, David Hockney sought to capture its resplendent landscape. Working in situ, the artist rendered the scenery using a drawing application on his iPad. With the touch screen as his blank canvas, Hockney layered stroke upon stroke of color to convey the texture, light and presence of the natural world before him; embracing the immediacy of his applied gestures to work swiftly and in the moment. Whether portraying the quiet isolation of nature, or the bustle of human visitors within the park, the varying complexities of each drawing provide insight into the artist's vision. Some are tightly composed, evoking the density and richness of forest foliage. In others, vistas take shape from an economical use of bold, confident gestures. Evident throughout is the artist's command of color, which instills a vitality and exuberance that transcends the physical realities of the landscape.

Recognizing their visual potential beyond the screen, Hockney transformed the iPad drawings into prints. Of the 29 works on view, 24 are printed on single sheets of paper (37 x 28 in./94 x 71.1 cm), while five are of a larger format and mounted on sheets of Dibond (93 x 70 in./236.2 x 177.8 cm).

Images from this series were first shown in the artist's 2012 – 2013 traveling museum exhibition *A Bigger Picture*, which originated at the Royal Academy, London, UK, and went on to The Guggenheim Museum Bilbao, Spain and the Museum Ludwig, Cologne, Germany. They were also included in the 2013 – 2014 solo show *A Bigger Exhibition* at the de Young Museum, San Francisco – less than 200 miles from Yosemite National Park.

In the year ahead, David Hockney will be the subject of three major museum exhibitions: *David Hockney RA: 82 Portraits and 1 Still Life*, Royal Academy of Arts, London, UK (2 July – 2 October 2016); *David Hockney*, National Gallery of Victoria, Melbourne, Australia (11 November 2016 – 13 March 2017); and *David Hockney*, Tate Britain, London, UK (9 February – 29 May 2017), which travels to the Centre Pompidou, Paris, France and the Metropolitan Museum of Art, New York, NY.

Concurrently on view at L.A.

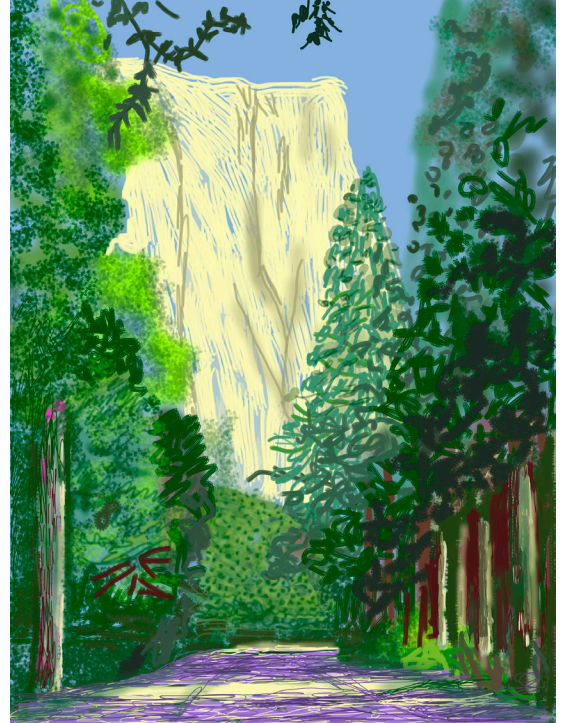
Louver: (13 July – 1 October 2016)

Second floor gallery

Heather Gwen Martin: New paintings

Skyroom

Matt Wedel: Sculpture



Yosemite II, October 16th 2011
iPad drawing printed on four sheets of paper, mounted on
four sheets of Dibond, each panel: 46 1/2 x 35 in. (118.1 x 88.9 cm)
overall: 93 x 70 in. (236.2 x 177.8 cm), Edition of 12
© David Hockney. Photo credit: Richard Schmidt



Through 2 September
Monday – Friday: 10am – 6pm
Wednesdays: 10am – 8pm
Saturday – Sunday: closed