

David Hockney
Drawing in a Printing Machine
 26 February - 28 March 2009

Opening Reception:
Thursday, 26 February, 7 - 9 p.m.

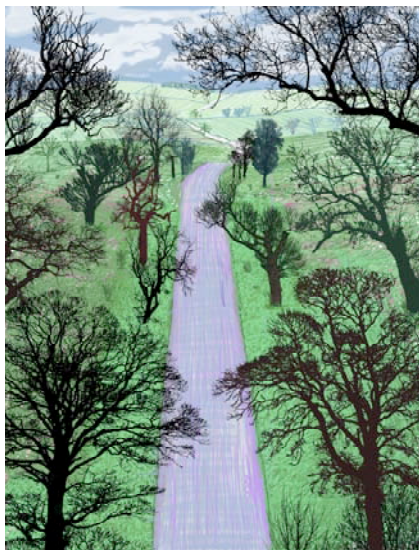
Venice, CA - L.A. Louver is pleased to present new landscape prints by David Hockney.

For this new series, Hockney turns to the computer, or as the artist terms, "a printing machine," to capture the light, space and color of the East Yorkshire countryside and its villages. This pastoral landscape first engaged Hockney as a young boy when he worked the land, stooking corn, during summer holidays. Over the past six years, the artist has returned with increasing frequency and duration to this locale of his youth, which has inspired a series of watercolors presented at L.A. Louver in March 2005, and large scale multi-panel oil paintings exhibited at L.A. Louver



Cardigan Road, Brid., 2008
 color inkjet print on paper
 44 3/4 x 32 in. (114 x 82 cm)

in February 2007 that later traveled to Tate Britain, London (June 2007 - February 2008), the Arts Club of Chicago (April - July 2008) and will be included in the extensive exhibition *David Hockney. Just Nature* at Museum Würth 26 April - 27 September, 2009.



Winter Road Near Kilham, 2008
 color inkjet print on paper
 48 1/2 x 37 in. (123 x 94 cm)

Throughout his life, Hockney has embraced a wide variety of media to express his vision, from oil, acrylic, watercolor, pastel, ink and pencil, to photography - including Polaroid compositions and photocollage - as well as a host of printing techniques such as etching, lithography, early Xerox printing (that lead to his "homemade print" series in 1986) and mass-market photomechanical reproduction.

To create these new prints Hockney utilizes his own digital photography and the tools of Photoshop. Drawing with a stylus on a tablet in front of the computer monitor, Hockney employs an extensive palette and broad range of strokes. The images are printed with inkjet, in bold, lush colours and in small editions of 25. Print sizes range from approximately 3 x 4 feet to 5 x 7 feet, in both vertical and horizontal formats.



Autumn Leaves, 2008
color inkjet print on paper
35 x 46 1/2 in. (89 x 118 cm)

Hockney has written of the new work:

The computer is a useful tool. Photoshop is a computer tool for picture making. It in effect allows you to draw directly in a printing machine, one of its many uses. One draws with the colours the printing machine has, and the printing machine is one anyone can have. They are now superior to any other kind of printing, but because it's very slow, of limited commercial appeal.

I used to think the computer was too slow for a draughtsman. You had finished a line, and the computer was 15 seconds later, an absurd position for someone drawing, but things have improved, and it now enables one to draw very freely and fast with colour. There are advantages and disadvantages to anything new in mediums for artists, but the speed allowed here with colour is something new, swapping brushes in the hand with oil or water - colour takes time.

These prints are made by drawing and collage, they exist either in the computer or on a piece of paper, they were made for printing, and so will be printed. They are not photographic reproductions.

David Hockney
November 18, 2008

Concurrent to **David Hockney: *Drawing in a Printing Machine***, L.A. Louver presents **Rebecca Campbell: *Poltergeist***, an exhibition of paintings, sculpture and installation works in the first floor galleries, and **Joel Shapiro's** sculpture in the Skyroom.

L.A. Louver is open Tuesday through Saturday, 10:00 a.m. to 6:00 p.m. Validated parking available.

For further information and visuals please contact:
Elizabeth East, L.A. Louver
45 North Venice Boulevard
Venice, CA 90291
Telephone 310-822-4955; Fax 310-821-7529;
Email elizabeth@lalouver.com; www.lalouver.com

L | A | LOUVER |