

LA Louver is open Tuesday through Saturday, 10:00 a.m. to 6:00 p.m. Validated parking available.

For further information and visuals please contact Elizabeth East, L.A. Louver Gallery, 45 North Venice Boulevard Venice, CA 90291; telephone 310-822-4955; fax 310-821-7529; e-mail elizabeth@lalouver.com; www.lalouver.com



On the cover: Raul's Trailer, 2005, watercolor on paper, 9 x 6 in. [22.9 x 15.2 cm]

Inside L-R: The Highest, 2005, watercolor on paper, 9 x 6 in. [22.9 x 15.2 cm]; Blazing Mountain, 2004, watercolor on paper, 8 3/4 x 6 in. [22.2 x 15.2 cm]

Back: Hot Barranca, 2005, watercolor on paper, 7 7/8 x 6 in. [20 x 15.2 cm]



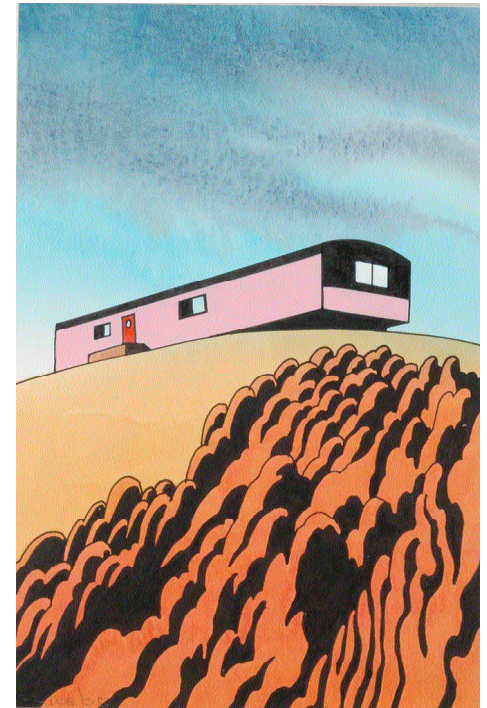
PRESS RELEASE

FOR IMMEDIATE RELEASE

Ken Price *Works on Paper*

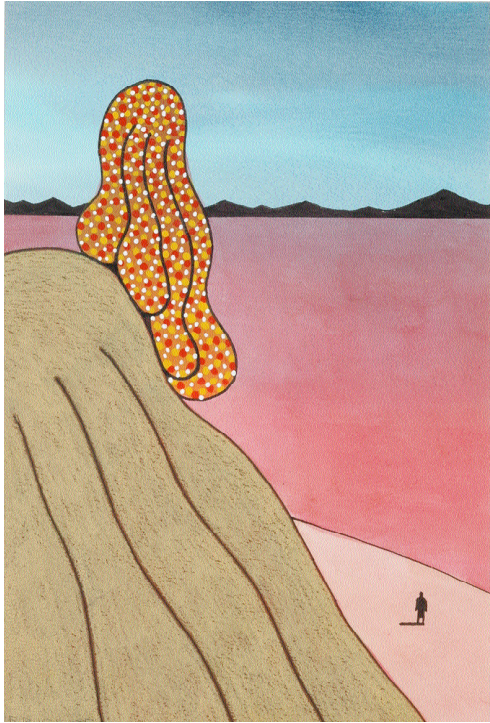
October 14 - November 12, 2005

Reception for the artist:
Friday, October 14 , 6 - 8 p.m.



45 North Venice Boulevard, Venice, CA 90291
telephone 310-822-4955; fax 310-821-7529;
e-mail elizabeth@lalouver.com.
www.lalouver.com

Ken Price *Works on Paper*



L.A. Louver is pleased to present an exhibition of recent works on paper by Ken Price.

The show is comprised of approximately thirty-five intimate watercolors, painted in a distinctive palette. Renown for his ceramic sculpture, this exhibition offers a rare insight into the imagination of the artist, who has previously rarely shown his works on paper.

In these watercolors Price explores three broad subjects: volcanos, trailer parks, and land outcroppings and fissures. Elements represented in the work has a close kin-

ship to the artist's sculpture. Sometimes the sculptures themselves are rendered as living entities within the composition, or they are referenced in the form and surface of the spewing volcanic larva, craters and land masses. The world Price creates is cartoon-like – a world that is rendered simply, joyfully and humorously. The works also allude to classical Asian art, and in particular, nineteenth-century Japanese woodblock prints, with their dramatic stylization and clearly defined contours.

The Artist

Following his graduation with an art degree from the University of Southern California in 1956, Price studied with the renown clay master Peter Voukos (1924-2002) at the Los Angeles County Art Institute (Now Otis College of Art + Design). First exhibiting at the legendary Ferus Gallery, Los Angeles in 1960, Price has had a distinguished career showing his sculpture in both private and public galleries around the world, including The Walker Art Center, Minneapolis; Menil Collection, Houston; Los Angeles County Museum of Art; Whitney Museum of American Art, New York; and the Louisiana Museum, Denmark. Price's work is included in numerous public collection including the Metropolitan Museum of Art and the Museum of Modern Art in New York, the National Gallery of Art and the Hirshhorn Museum and Sculpture Garden, Washington, D.C.; the Art Institute of Chicago; Los Angeles Country Museum of Art and the Museum of Contemporary Art, Los Angeles; the Stedelijk Museum, Amsterdam, and the Victoria and Albert Museum, London.

Rarely shown, Ken Price's works on paper were the subject of the exhibition "Small is Beautiful" at the University Art Museum, California State University, Long Beach in 2002, and were included in the exhibition "Ken Price: Sculpture and Drawings 1994 – 2004," at the Chinati Foundation, Marfa, Texas in 2004.



Concurrent to Ken Price: Works on paper, LA Louver presents Edgard de Souza's sculpture and drawings in the first floor, and a new Gwynn Murrill sculpture entitled "Fountain" in the skyroom.