

L | A | L O U V E R |

VENICE, CALIFORNIA  
LALOUPER.COM

45 North Venice Boulevard  
Venice, CA 90291  
Tel 310 822 4955  
Fax 310 821 7529

Hours: Tue – Sat 10am – 6pm  
Validated parking available



# Alice Neel Paintings

in association with  
Jeremy Lewison Limited

20 May — 26 June 2010

L | A | LOUVER |

VENICE, CALIFORNIA  
LALOUPER.COM

Sam (Sea Biscuit)

1940, oil on canvas

36 1/8 x 26 1/8 in. (91.8 x 66.4 cm)



Horace Cayton  
1949, oil on canvas  
30 1/8 x 24 in. (76.6 x 61 cm)



Peggy

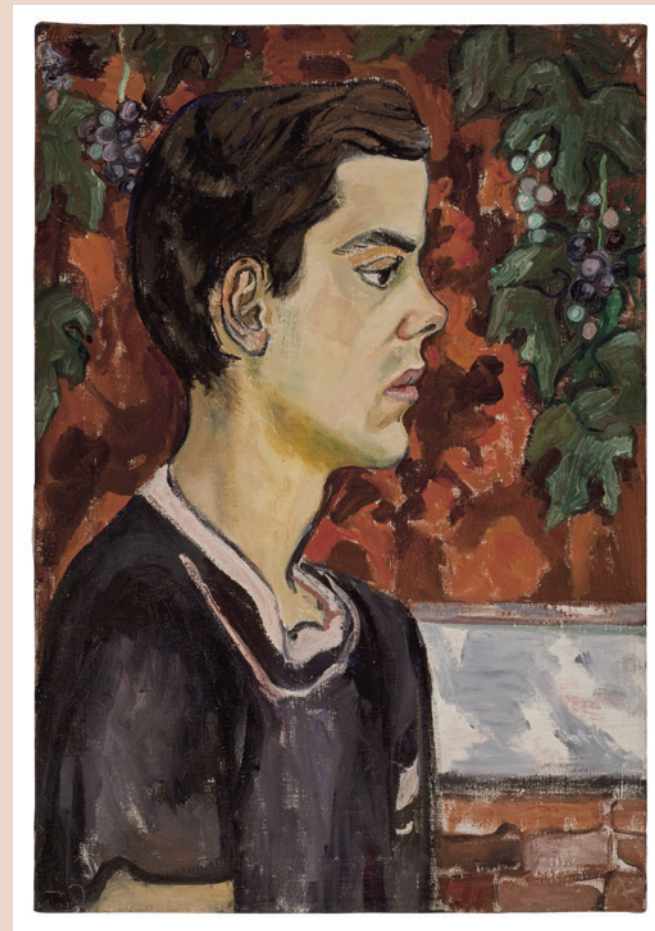
c.1949, oil on canvas  
18 x 36 in. (45.7 x 91.4 cm)



**Richard**

c.1952, oil on canvas

26 3/16 x 18 in. (66.5 x 45.7 cm)



Hubert Satterfield

c.1958, oil on canvas

26 <sup>3</sup>/<sub>16</sub> x 18 in. (66.5 x 45.7 cm)



Stewart Mott

1961, oil on canvas

44 1/8 x 27 1/8 in. (112.1 x 68.9 cm)





Abe's Grandchildren

1964, oil on canvas

40 1/8 x 30 in. (101.9 x 76.2 cm)



Frank Gentile  
1965, oil on canvas  
48 x 32 1/8 in. (121.9 x 81.6 cm)



Black Man

1966, oil on canvas

44 x 28 1/8 in. (111.8 x 71.4 cm)



Red Grooms and Mimi Gross (no.1)

1967, oil on canvas

60 x 42 in. (152.4 x 106.7 cm)



Joey Scaggs

1967, oil on canvas

80 1/8 x 35 7/8 in. (203.5 x 91.1 cm)



Richard Gibbs  
1968, oil on canvas  
64 x 50 in. (162.6 x 127 cm)



Linus and Ava Helen Pauling

1969, oil on canvas  
48 x 42 in. (121.9 x 106.7 cm)



Kris Kirsten  
c.1971, oil on canvas  
47 7/8 x 30 in. (121.6 x 76.2 cm)

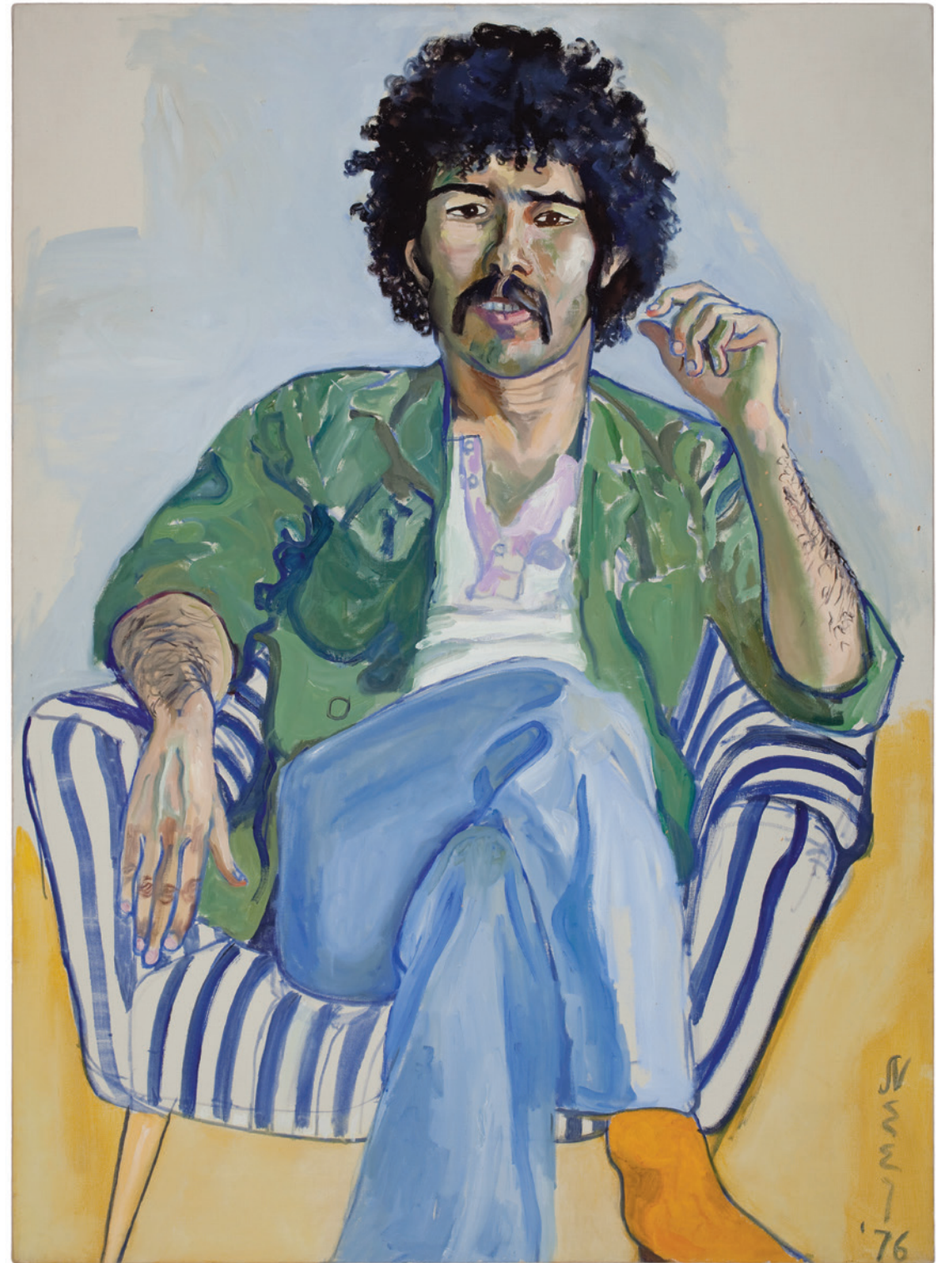




The Arab

1976, oil on canvas

43 7/8 x 32 1/8 in. (111.4 x 81.6 cm)



Ann Sutherland Harris and Neil  
1978, oil on canvas  
40 x 30 1/8 in. (101.6 x 76.5 cm)



# Alice Neel Paintings

L.A. Louver in association with  
Jeremy Lewison Limited

20 May — 26 June 2010

## Sam (Sea Biscuit)

1940, oil on canvas  
36 1/8 x 26 1/8 in. (91.8 x 66.4 cm)

## Horace Cayton

1949, oil on canvas  
30 1/6 x 24 in. (76.6 x 61 cm)

## Peggy

c.1949, oil on canvas  
18 x 36 in. (45.7 x 91.4 cm)

## Richard

c.1952, oil on canvas  
26 3/16 x 18 in. (66.5 x 45.7 cm)

## Hubert Satterfield

c.1958, oil on canvas  
26 3/16 x 18 in. (66.5 x 45.7 cm)

## Stewart Mott

1961, oil on canvas  
44 1/8 x 27 1/8 in. (112.1 x 68.9 cm)

## Abe's Grandchildren

1964, oil on canvas  
40 1/8 x 30 in. (101.9 x 76.2 cm)

## Frank Gentile

1965, oil on canvas  
48 x 32 1/8 in. (121.9 x 81.6 cm)

## Black Man

1966, oil on canvas  
44 x 28 1/8 in. (111.8 x 71.4 cm)

## Red Grooms and Mimi Gross (no.1)

1967, oil on canvas  
60 x 42 in. (152.4 x 106.7 cm)

## Joey Scaggs

1967, oil on canvas  
80 1/8 x 35 7/8 in. (203.5 x 91.1 cm)

## Richard Gibbs

1968, oil on canvas  
64 x 50 in. (162.6 x 127 cm)

## Linus and Ava Helen Pauling

1969, oil on canvas  
48 x 42 in. (121.9 x 106.7 cm)

## Kris Kirsten

1971, oil on canvas  
47 7/8 x 30 in. (121.6 x 76.2 cm)

## The Arab

1976, oil on canvas  
43 7/8 x 32 1/8 in. (111.4 x 81.6 cm)

## Ann Sutherland Harris and Neil

1978, oil on canvas  
40 x 30 1/8 in. (101.6 x 76.5 cm)

# Alice Neel

1900 – 1984

Fiercely independent and free-spirited, Alice Neel worked at a time when figurative painting was unfashionable. She imbued her paintings not only with a keen likeness, but also a powerful understanding of her subjects' inner lives, within an incisive temporal and social context. Born and raised in Pennsylvania, she lived in Cuba in her 20s, and later settled in New York: in Greenwich Village, Spanish Harlem, and the Upper West Side. Despite personal tragedies that included failed relationships, a nervous breakdown, and the loss of two children, Neel did not waiver in her passion to paint. Her subjects were individuals who caught her eye: her sons, grandchildren, friends, acquaintances, art world figures, and people on the street. Neel only received acclaim late in life, but is now valued one of the most important American painters of the 20<sup>th</sup> Century.

Major Survey Exhibition:

# Alice Neel

Painted Truths

21 March — 13 June 2010  
[The Museum of Fine Arts, Houston](#)  
Houston, Texas

8 July — 17 September 2010  
[Whitechapel Gallery](#)  
London, England

9 October 2010 — 2 January 2011  
[Moderna Museet](#)  
Malmö, Sweden



Available from the Museum of Fine Arts, Houston and Yale University Press:

## Alice Neel *Painted Truths*

Edited by Jeremy Lewison and Barry Walker  
With essays by Tamar Garb, Jeremy Lewison, Robert Storr and Barry Walker, and appreciations by Frank Auerbach, Marlene Dumas and Chris Ofili